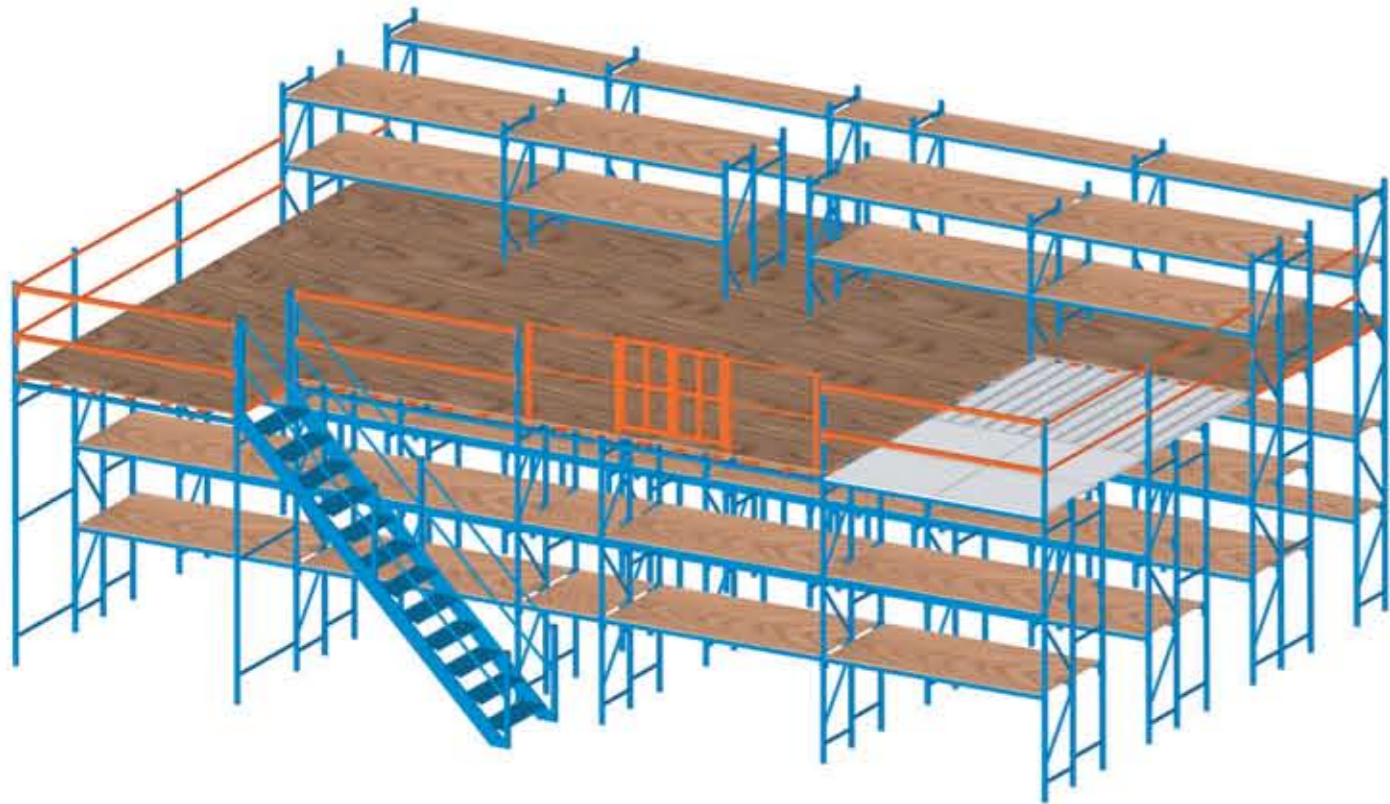


LS500 AS MEZZAZINE SYSTEM

In addition as a modular storage rack, LS500 LongSpan Racking System can also be used as Mezzanine System. Extra level of floors could be erected via the structures of upright, beam and floor joist.

A few selections of decking also available based on user's requirement and budget concerned. Additionally options of safety accessories also available to ensure a safe working environment.

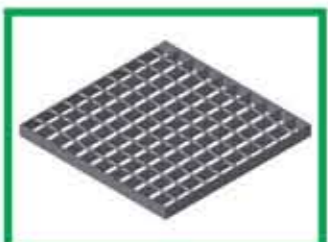
LS500 as Mezzanine System



Floor Decking Options:



(F1) Plywood



(F2) Mesh Grating

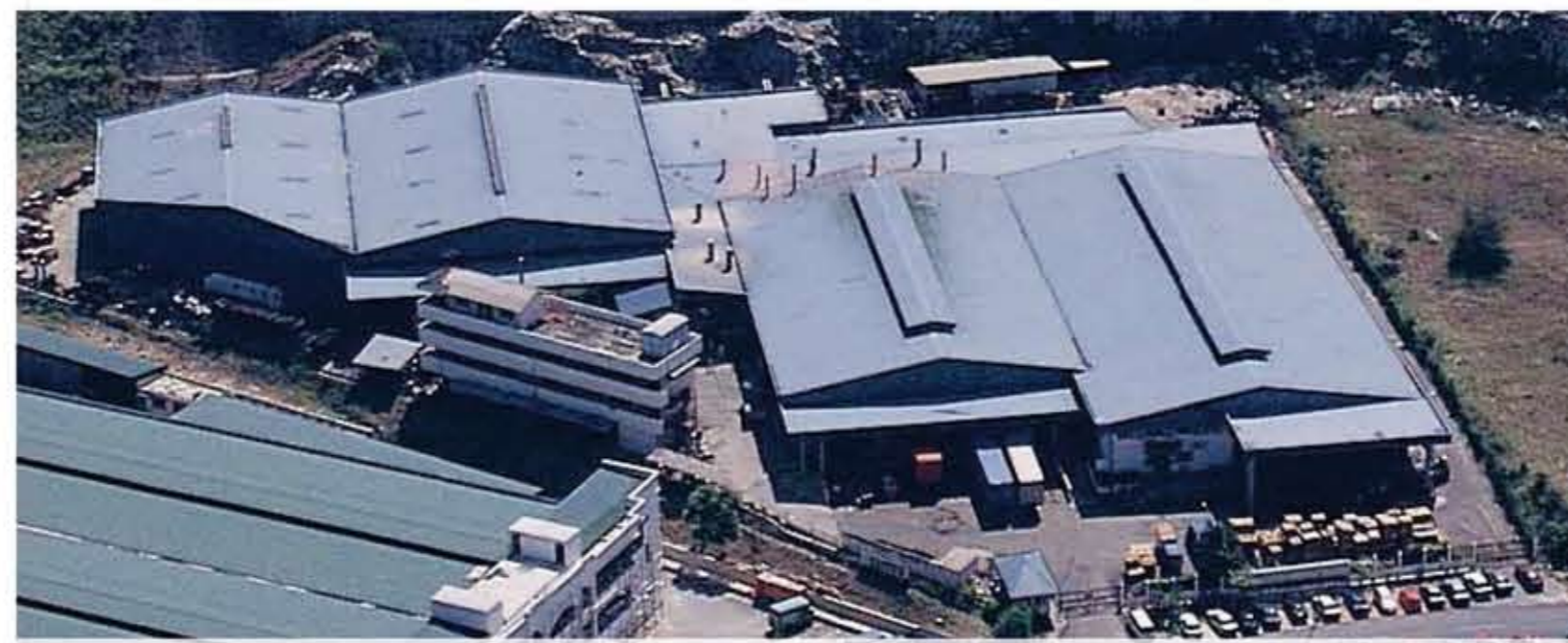


(F3) Steel Grating Panel

Safety Accessories



Loading Gate & Handrails



PRESTAR STORAGE SYSTEM SDN BHD

Lot 39 Rawang Industrial Estate, 16 1/2 miles Jalan Ipoh,

48000 Rawang, Selangor, Malaysia

Tel. No. 603-60913288 Fax. No. 603-60925202

Email: info@prestar.com.my

Website: www.prestar.com.my



Y K TOH MARKETING (S) PTE LTD.

8 Changi North Street 1, TSK Building,

Singapore 498829

Tel : +65-6542 3232 Fax : +65-6542 3636

Email : sunny@yktoh.com

Website : www.yktoh.com

LS500 LONGSPAN RACKING SYSTEM



LS500 LONGSPAN RACKING SYSTEM

INTRODUCTION

With the latest up-trend of adapting Just-In-Time (JIT) that requires right quantity but high varieties; it has become a constant challenge for warehousing and order picking. Fast order picking and high rates of retrieval accuracy are impending in order for businesses to remain competitive. Additionally, storage space need to be optimized fully to achieve lower operational cost.

The improved MYSTAR LONGSPAN 500 (LS500) SYSTEM is to serve the above needs. The ergonomic profiles are designed for medium-duty warehouse applications yet in a not bulky appearance. With profile design & capabilities that proves to be stronger than Boltless System and almost similar as Pallet Racking System, the system can either be used as Storage Rack or Mezzanine System.

The LS500 system is suitable for industries/businesses that fall into following characteristic :

- Hand-Loaded Storage**
The LS500 system is intended for hand loaded storage method, whereby products stored are placed onto the beams or shelves and picked from them manually.
- Medium-Duty Storage**
For storing of products' weight NOT MORE THAN 1,000kgs.
- Storage & Display Equipment**
The LS500 system can be designed and used as storage/display equipments for retail industries.

The finishing touch for MYSTAR LS500 System is epoxy powder coated BLUE to ensure a long lasting colour coat and minimize maintenance on the racks appearance.

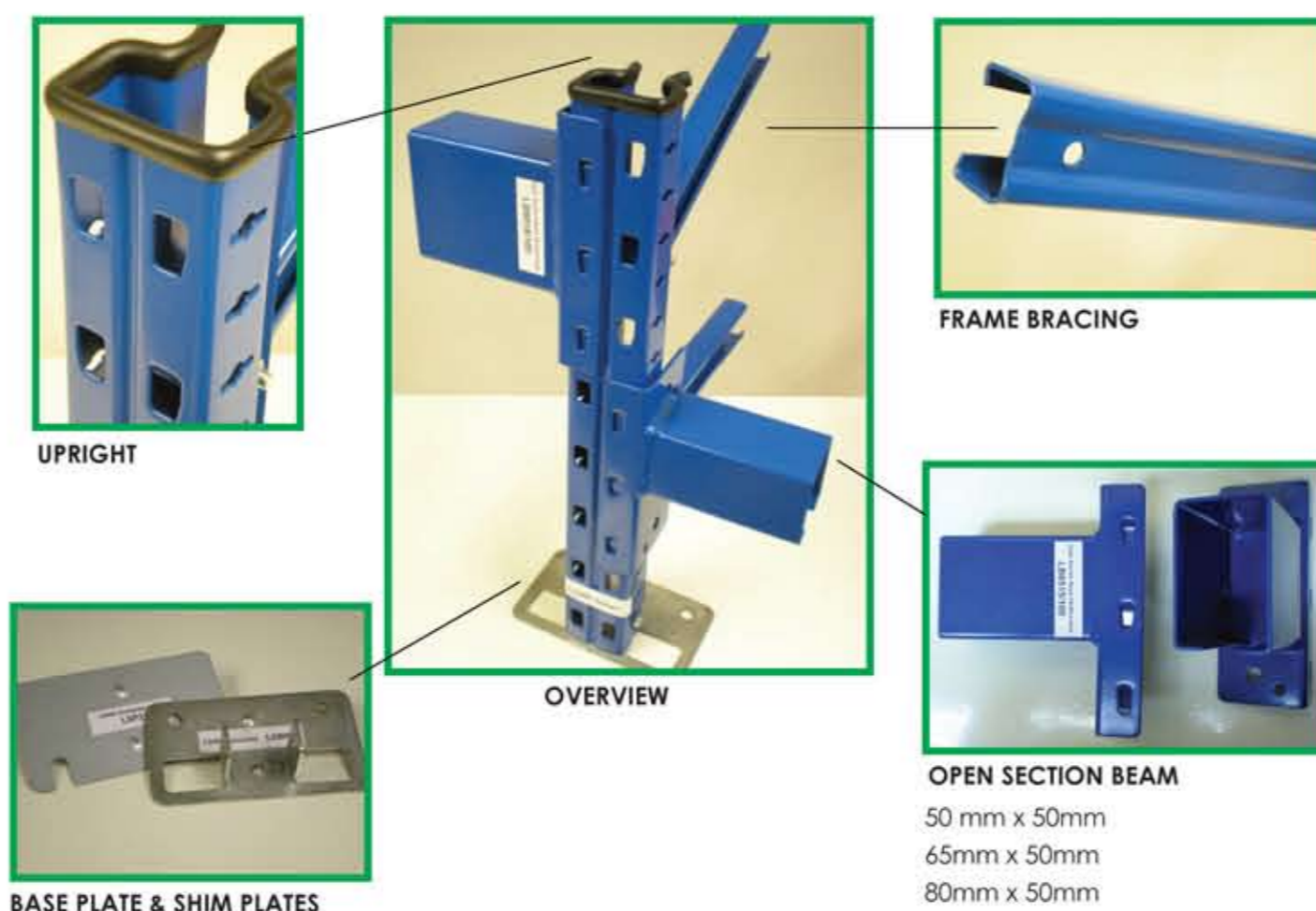
BASIC TECHNICAL DATA

1. Upright & Frame	
Frame Depth	600 / 900 / 1200mm
Frame Height	10,000mm(H) or Maximum Frame Load Applied
Frame Load	Up to 5,000Kgs
2. Beam Length & Load	
Loading Per Level (UDL)	Up to 2,000Kgs *(Subject to selected beam length)
Standard Clear Entry	1240 / 1550 / 1850 / 2150 / 2460 / 2700mm
	* (Special length may be requested but subjected to our D&E approval)

If you want to buy a peace of mind for your company's storage solution, let Prestar Storage System Sdn Bhd resolve the same that best suit your company*. Please feel free to go to www.prestar.com.my.

*If LS500 do not suit your storage system, we have ample solutions that may resolve your storage solution.

BASIC COMPONENTS OF LS500 SYSTEM



BENEFIT OF LS500 SYSTEM

- Versatile**
Profiles design that suit different type of business & industries.
- Multiple usage and application**
Suitable for storage of carton box, documents, plastic bins and small component parts.
- Increase storage capacity**
Enabling user enjoy increase storage capacity without incurring extra investment in material handling equipment such as forklift.
- High Durability & Affordability**
With maintenance free and minimum investment, LS500 system could give storage solution that at par with heavy-duty racking system.
- Customizable**
It is an individual modular unit that could installed with Carton-flow System.

INDUSTRIES / AREA OF USAGE

A few businesses or industries that could benefited via using this system are such as,

- Office (Archive storage)
- Retails & Wholesale (Storage & Display)
- Distribution center with manual handling & order processing

Warehouse for record managements, electronic parts, small & medium parts.

LS500 RACKING PARTS & ACCESSORIES

In addition serving as a simple storage rack, there are also wide varieties of accessories that could be 'bolt-on' to the system to suite for different warehouse and storage applications :

ENCLOSING OPTIONS :

- Side & Back Netting**
This are to ensure goods do not falls out from the rack yet allowing maximum visibility and air circulations inside the storage areas.



Side & Back Netting

SHELVE DECKING OPTIONS :

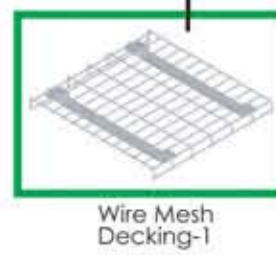
- Plywood with Center Support**
Different thickness of plywood could be used based on requirements. These are the most commonly selected option for storage of dry & heavy items.
- Fiberboard Shelf with Divider**
This application is well-suited for storing of a few light weight items or different variety of components in the allocated storage location in 1 shelf with divider separating in between.
- Wire Mesh Decking**
Selection for this type of application will allow higher visibility and water penetration for fire safety.



Plywood with Center Support



Fiberboard Shelf with Divider



Wire Mesh Decking-1

ENCLOSING OPTIONS :

- Side & Back Steel Panel**
This application enables higher privacy & security on items stored as the whole rack with steel sheet.



Side & Back Steel Panel

SHELVE DECKING OPTIONS :

- Steel Decking Panel**
This application could withstand higher durability and maximum exposure to moist or water without worrying on rust problem.
- Steel Shelf with Shelf Clip**
Another invention from MYSTAR, which enable Boltless Shelving System to be 'clip' onto the Longspan System without hassle.
- Perforated Steel Shelf With Free Standing Divider**
Perforated Shelf with Free Standing Divider can also be used in the LS500 Longspan System as well.



Steel Decking Panel



Steel Shelf with Shelf Clip



Perforated Steel Shelf with Free Standing Divider